

DWR WHLA Monitoring

DWR personnel were out on White Lake on May 30th, 2019. A total of 79 points were sampled throughout the lake (Figure 1). Three rake tosses were done at each point. There was no Hydrilla observed at any of the points. The dominant species in the lake during the survey was Spike Rush (*Eleocharis baldwinii*). Each rake drag regularly had vegetation completely covering the entire rake. Also, a lot of floating spike rush was observed throughout the entire lake. Other plants observed during the survey include pondweed (*Potamogeton spp.*) near the Camp Clearwater boat ramp and Milfoil (*Myriophyllum spp.*). A recording fathometer (SONAR) was used to record vegetation density (Figures 2 &3). All of the plants were growing just a few inches off the bottom so they did not show up very well on the SONAR.

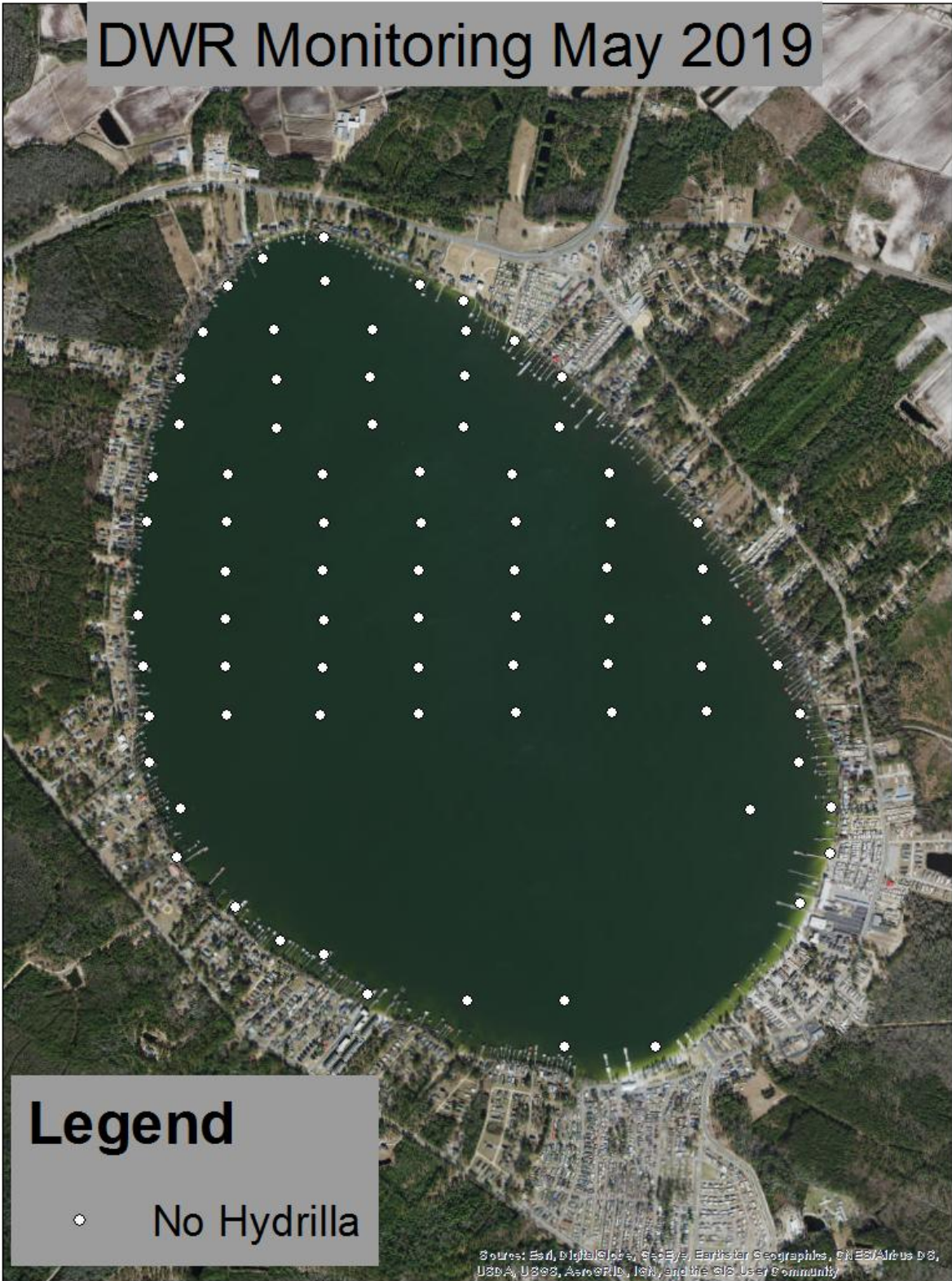


Figure 1. Map of Rake Toss Points

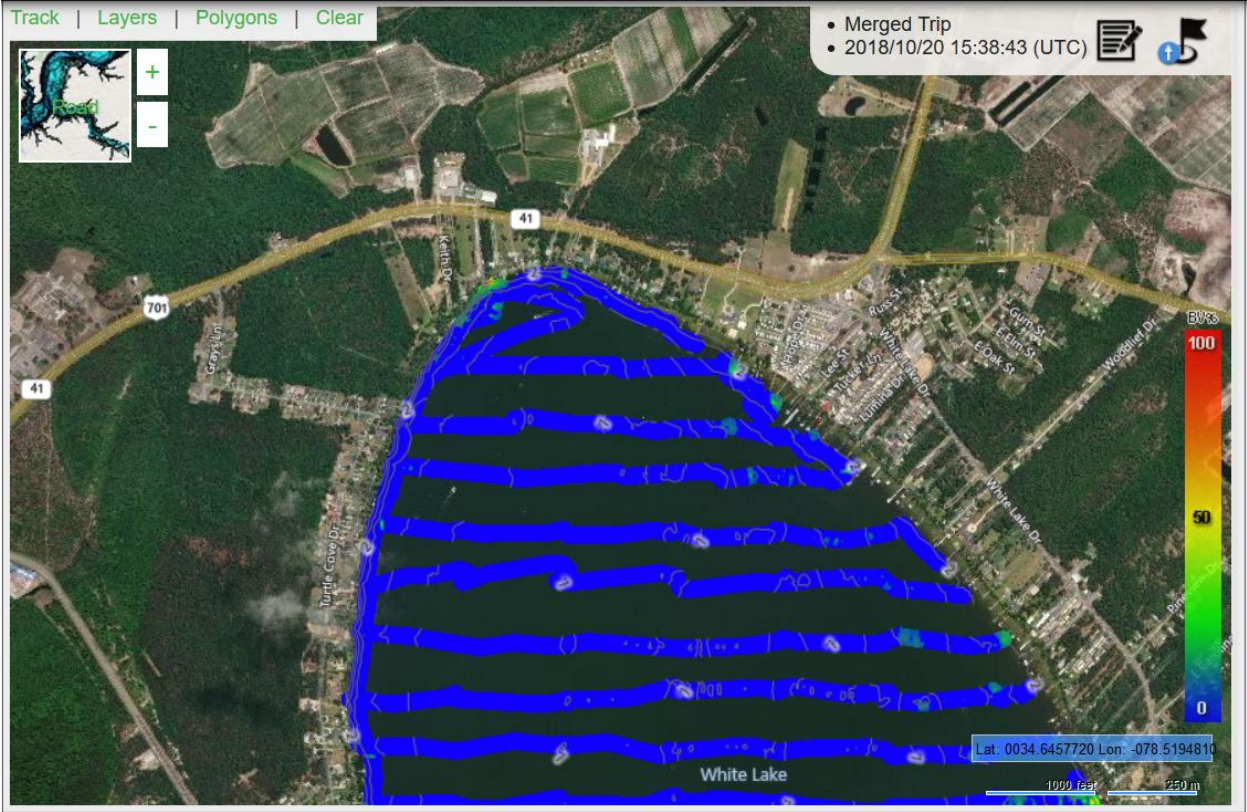


Figure 2. Sonar Data for Northern Half of WHLA

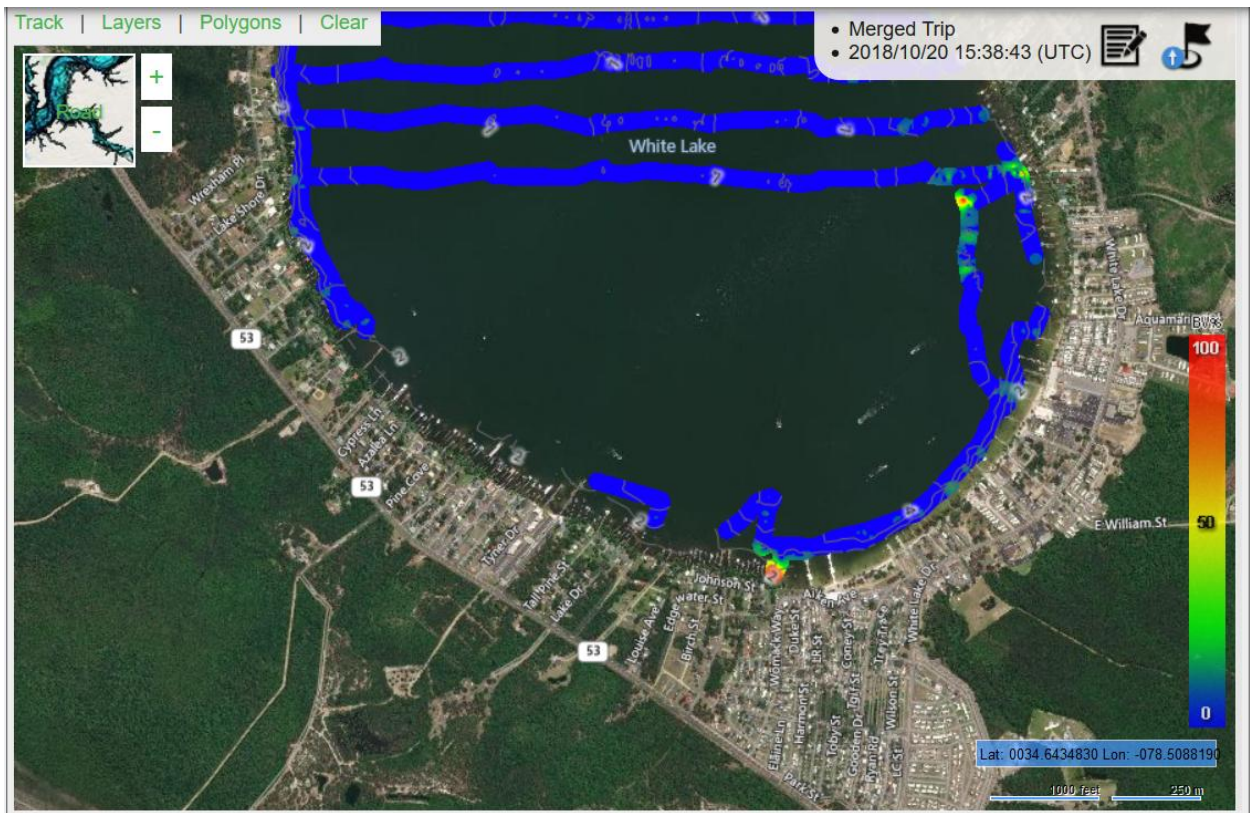


Figure 3. Sonar Data for Southern Half of WHLA.